

Holiday Inn Lancaster



[View the Access Guide](#)

Waterside Park, Caton Road, Lancaster, Lancashire LA1 3RA

0871 942 9047

www.ihg.com/holidayinn/hotels/gb/en/lancaster/xqlcr/hoteldetail (<https://www.ihg.com/holidayinn/hotels/gb/en/lancaster/xqlcr/hoteldetail>)

Guide Last Updated: 13/02/2018

[Something changed? \(/contact/something_changed?destination=/access-guide/kew-green/holiday-inn-lancaster\)](#)



Google

(<https://maps.google.com/maps?ll=54.070914,-2.777819&z=14&t=m&hl=en-US&q=US&mapclient=apiV3>)

Map data ©2018 Google

Access Guide



[Explain these icons \(/our-icons\)](#)

[Expand all](#) [Collapse all](#)

Hotel Introduction

[Collapse -](#)

Related Access Guide(s)

[Collapse -](#)

- [For the Holiday Inn Lancaster - Leisure Facilities DisabledGo access guide please click here \(new tab\) \(https://www.disabledgo.com/access-guide/kew-green/holiday-inn-lancaster-leisure-facilities\).](https://www.disabledgo.com/access-guide/kew-green/holiday-inn-lancaster-leisure-facilities)

Hotel Information

[Collapse -](#)

- The hotel has its own parking facilities.
- This hotel has its own restaurant located on the ground floor.
- The restaurant can be accessed from the ground floor.
- Conference/meeting facilities are available.
- The conference/meeting facilities are located on the ground floor.

Room Information

[Collapse -](#)

- The hotel has 156 rooms in total.
- There is an/are accessible room(s) within the hotel.
- The accessible room(s) is/are located on the second floor.
- The hotel has 3 accessible room(s) with accessible ensuite facilities.
- There is/are 3 accessible room(s) with a bath.
- There is an/are adjoining room(s) available for the accessible room(s).
- The accessible rooms are 10m - 40m from the lift.
- There are no rooms on the ground floor.
- There is a/are standard room(s) available on the ground floor.
- There is an/are adjoining room(s) available for the standard room(s).
- Rooms on other floors are accessed via stairs or lift.
- Bed raisers are not available on request.
- Bath mats are available on request.
- All televisions have subtitles available.

Getting Here

Collapse -

By Road

Collapse -

- The Holiday Inn Lancaster is located just off the M6 at junction 34 on Caton Road. The postcode for sat-nav to this location is LA1 3RA.
- The hotel has its own car park which is free for guests. Guests must register their cars at the main reception to get free parking.

By Bus

Collapse -

- There is a bus stop within 150 metres of the hotel.
- There is a bus stop outside the car park entrance on Caton Road. The Services which stop here are 80/81/81A and 477.
- [For more information on buses in Lancaster please click here \(opens new tab\) \(http://www.localtransit.net/?title=Search+Lancaster+Bus+Routes&subtitle=Bus%252C+Train+or+Subway+Schedules&utm_source=adcenter&utm_medium=cpc&utm_term=lancaster\)](http://www.localtransit.net/?title=Search+Lancaster+Bus+Routes&subtitle=Bus%252C+Train+or+Subway+Schedules&utm_source=adcenter&utm_medium=cpc&utm_term=lancaster)

By Train

Collapse -

- The nearest Railway Station is Lancaster.
- Lancaster Train Station is in the centre of Lancaster and is approximately 2.6 miles from the hotel. There are several bus routes and taxi's available from the station.
- [For more information on National Rail please click here \(opens new tab\) \(http://www.nationalrail.co.uk/stations_destinations/LAN.aspx\)](http://www.nationalrail.co.uk/stations_destinations/LAN.aspx).

Getting Help and Assistance

Collapse -

- There is a member of staff available for help and assistance.
- Staff receive disability awareness/equality training.
- Staff do not receive deaf awareness training.
- There is not a member of staff trained in British Sign Language.
- British Sign Language interpreters cannot be provided on request.
- The alternative format documents can be provided in include; large print on request and different languages on request.
- There is an assistance dog toilet or toileting area at the venue/near by.
- The assistance dog toilet or toileting area is located on the grassed areas around the hotel.
- Water bowls for assistance dogs are available.
- There are mobility aids available.
- The mobility aids available include wheelchairs.
- To obtain mobility aids please contact reception.

Parking

Collapse -

Parking

Collapse -

- The hotel does have its own parking facilities.
- The car park is located at the front and side of the hotel.
- The car park type is open air/surface.
- The car park does not have a height restriction barrier.
- The car park does not have a barrier control system.
- The car park surface is tarmac.
- There is a/are Blue Badge parking bay(s) available.
- The Blue Badge bay(s) markings are faded.
- There is/are 4 designated Blue Badge parking bay(s) within the car park.
- The dimensions of the designated Blue Badge parking bay(s) surveyed are 360cm x 730cm (11ft 10in x 23ft 11in).
- There is a 120cm hatched zone around the Blue Badge parking bay(s).
- The dimensions of other designated Blue Badge parking bay(s) vary in size.
- Parking spaces for Blue Badge holders do not need to be booked in advance.
- Clearly marked/signposted parent and child parking bays are not available.
- All parking spaces are provided on a first come first served basis.

Paying

Collapse -

- There are not parking charges for the car park.

Access from the Car Park

Collapse -

- The route from the car park to the entrance is accessible to a wheelchair user with assistance.
- Assistance may be required because there is/are dropped kerbs.
- The entrance is clearly visible from the car park.
- The surface on the approach to the entrance is tarmac, concrete tiles and block paving.
- There is not a road to cross between the car park and the entrance.
- There is some tactile paving on dropped kerbs between the car park and the entrance.
- The nearest designated Blue Badge parking bay is approximately 12m (13yd 4in) from the hotel entrance.

Drop-off Point(s)

Collapse -

- There is not a/are not clearly marked drop-off point(s).

Comments

Collapse -

- Parking is free to guest's only. Please be sure to register your car at reception to get free parking.



1



2



3



4

Outside Access (Hotel Entrance)

Collapse -

Entrance

Collapse -

- This information is for the entrance located at the front of the hotel.
- The entrance area/door is clearly signed.
- There is ramped/sloped access at this entrance.
- There is a canopy or recess which provides weather protection at this entrance.
- The entrance door(s) does not/do not contrast visually with its immediate surroundings.
- The bell/buzzer is not in a suitable position to allow wheelchair users to gain access.
- The height of the bell/buzzer is 129cm (4ft 3in).
- The main door(s) open(s) automatically.
- The door(s) is/are double width.
- The width of the door opening is 106cm.
- There is a small lip on the threshold of the entrance, with a height of 2cm or below.
- There is a second set of doors.
- The door(s) open(s) automatically.
- The door(s) is/are double width.
- The door(s) is/are permanently held open.
- The width of the door opening is 138cm.
- There is a small lip on the threshold of the entrance, with a height of 2cm or below.
- There is a member of staff available for assistance at this entrance.

Ramp/Slope

Collapse -

- The ramp/slope is located in front of the entrance.
- The gradient of the ramp/slope is slight.



1



2



3



4



5

Reception

Collapse -

Reception

Collapse -

- The reception point is located to the left as you enter the hotel entrance.
- The reception point is approximately 9m (9yd 2ft) from the hotel entrance.
- The reception area/desk is clearly visible from the entrance.
- There is step free access to the reception point.
- There is a clear unobstructed route to the reception point.
- There are no windows, TVs, glazed screens or mirrors behind the reception point which could adversely affect the ability of someone to lip read.
- The reception counter is not placed in front of a background which is patterned.

- The lighting levels at the reception point are good.
- The height of the reception counter is high (110cm+).
- There is sufficient space to write or sign documents on the counter.
- There is a lowered section of the counter.
- The lowered section of the counter is at the recommended height of 76cm.
- There is sufficient space to write or sign documents on the lowered section of the counter.
- There is a clear knee recess beneath the lowered section of the counter.
- The clear knee recess does not have the recommended dimensions of 70cm (height) x 50cm (depth).
- The counter is staffed.
- Clipboards can be provided to anyone who is unable to use the desk.
- There is not a hearing assistance system at the reception point.
- The touch screen is not at a suitable height for a wheelchair user.
- Signs and universally accepted symbols or pictograms, indicating lifts, stairs, WCs, circulation routes and other parts of the building are not provided in the reception area.
- The type of flooring in the reception area is carpet and vinyl.

Reception Waiting Area

Collapse -

- There is a waiting area close to the reception point.
- Access to the waiting area is unobstructed.
- The seats do not have armrests.
- There is sufficient space for a wheelchair user to use the waiting area.



1



2



3



4

Getting Around

Collapse -

Access

Collapse -

- There is step-free access throughout the majority of the building.
- There is/are 3 clearly marked step(s), with no handrails, for access to the stairs and some of the conference suites.
- The height of the step(s) is/are between the recommended 15cm and 18cm.
- The going of the step(s) is/are not between the recommended 30cm and 45cm.
- There is an enclosed platform lift which overcomes the steps.
- The level change 1 steps are shown in photographs 1 and 2.
- There is/are 6 clearly marked step(s), with handrails on both sides, for access to the Halton Suite.
- The height of the step(s) is/are between the recommended 15cm and 18cm.
- The going of the step(s) is/are between the recommended 30cm and 45cm.
- Level change 2 is shown in photographs 3 and 4.
- There is a slight ramp, with no handrails, for access to the Cafe/Bar and the Restaurant areas.
- The width of the ramp/slope is 122cm (4ft).
- The ramp/slope does bypass the step(s).
- There is/are 3 clearly marked step(s), with no handrails, for access to the Cafe/Bar and the Restaurant areas.
- The height of the step(s) is/are between the recommended 15cm and 18cm.
- The going of the step(s) is/are between the recommended 30cm and 45cm.
- Level change 3 is shown in photographs 5, 6 and 7.

Circulation

Collapse -

- There are doors in corridors/walkways which have to be opened manually.
- The type of flooring in corridors/walkways is carpet and laminate.
- There is some flooring in corridors/walkways which includes patterns or colours which could be confusing or look like steps or holes to some people.
- There is some flooring in corridors/walkways which is shiny and could cause issues with glare or look slippery to some people.
- There is good colour contrast between the walls and floor in the majority of corridors/walkways.
- The lighting levels are varied.
- Access to other floors/levels is via stairs and lift.

Signage

Collapse -

- Wayfinding signage is provided.
- The colour, design and typeface of signs is consistent throughout the building.

Audio

Collapse -

- This venue does play background music in public areas.
- Music is played in the reception, cafe/bar and restaurant areas.
- There is a hearing assistance system in the public areas of the building.
- The system is a portable loop.
- The hearing assistance system is available only on request.



1



2



3



4



5



6



7



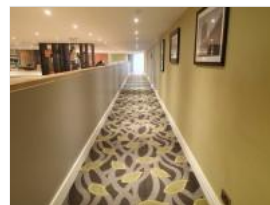
8



9



10



11

Eating and Drinking (Cafe/Bar)

Collapse -

- The following information is for the café/bar.
- The café/bar is located on the ground floor, next to the reception foyer.
- There is ramped/sloped or stepped access to the café/bar.
- Full table service is available.

- Food and/or drinks can be ordered from the service counter.
- There is not a hearing assistance system.
- There is ramped/sloped or stepped access within the café/bar.
- There is ample room for a wheelchair user to manoeuvre.
- This area does play background music.
- The type of flooring in this area is carpet, vinyl and tiles.
- Some tables are permanently fixed.
- No chairs are permanently fixed.
- Some chairs have armrests on both sides.
- The nearest table is approximately 2m from the entrance/opening.
- The nearest table is approximately 1m from the till/counter.
- The distance between the floor and the lowest table is 59cm.
- The distance between the floor and the highest table is 99cm.
- The standard height for tables is 98cm.
- Plastic/takeaway cups are available.
- Plastic/takeaway cutlery is available.
- Drinking straws are available.
- There are menu boards/signs available.
- Menus are not available in Braille.
- Menus are not available in large print.
- Picture menus are not available.
- Menus are clearly written.
- Menus are presented in contrasting colours.
- The type of food served here is hot and cold meals and snacks.
- The lighting levels are good.



1



2



3



4



5



6

Eating and Drinking (Restaurant)

Collapse -

- The following information is for the restaurant.
- The restaurant is located on the ground floor, to the right of the reception foyer.
- There is ramped/sloped or stepped access to the restaurant.
- Full table service is available.
- Food and/or drinks can be ordered from the service counter.
- There is not a hearing assistance system.
- There is ramped/sloped or stepped access within the restaurant.
- There is ample room for a wheelchair user to manoeuvre.
- This area does play background music.
- The type of flooring in this area is vinyl and tiles.
- No tables are permanently fixed.
- Some chairs are permanently fixed.

- Some chairs have armrests on both sides.
- The nearest table is approximately 21m from the entrance/opening.
- The nearest table is approximately 2m from the till/counter.
- The standard height for tables is 74cm.
- Plastic/takeaway cups are available.
- Plastic/takeaway cutlery is available.
- Drinking straws are available.
- There are hand held menus available.
- Menus are not available in Braille.
- Menus are not available in large print.
- Picture menus are not available.
- Menus are clearly written.
- Menus are presented in contrasting colours.
- The type of food served here is an a la carté menu.
- The lighting levels are good.



1



2



3



4



5



6

Conference / Meeting Facilities (Farrell Heyworth)

Collapse -

- Conference/meeting facilities are available.
- The conference/meeting facilities are located on the ground floor, to the left as you enter the hotel entrance.
- There is step free access to the conference/meeting facilities, via lift.
- The door opening width(s) is/are 75cm+ for the room(s).
- There is a hearing assistance system for the room(s) available on request.
- There is a/are chair(s) with armrests on both sides within the room(s).
- There is not sufficient space for a wheelchair user to manoeuvre within the room(s).
- The lighting levels in the room(s) are good.



1



2

Conference / Meeting Facilities (Halton Suite)

Collapse -

- Conference/meeting facilities are available.
- The conference/meeting facilities are located on the ground floor, to the right of reception.
- There is stepped access to the conference/meeting facilities.

- The door opening width(s) is/are 75cm+ for the room(s).
- There is a hearing assistance system for the room(s) available on request.
- There are no chairs with armrests on both sides within the room(s).
- There is sufficient space for a wheelchair user to manoeuvre within the room(s).
- The lighting levels in the room(s) are adjustable.



1



2



3



4

Other Floors

Collapse -

Stairs

Collapse -

- Stairs can be used to access other floors.
- The stairs are for public use.
- The stairs are located in the main corridor.
- The stairs are approximately 13m from the hotel entrance.
- Signs indicating the location of the stairs are not available from the entrance.
- There are manual, heavy, single doors to enter and exit the stairwell on all floors.
- The floors which are accessible by stairs are G, 2 and 3.
- There are 15+ steps between floors.
- The height of the step(s) is/are between the recommended 15cm and 18cm.
- The going of the step(s) is/are between the recommended 30cm and 45cm.
- The steps are not clearly marked.
- There is a/are handrail(s) at the step(s).
- The steps have a handrail on both sides.
- Handrails are at the recommended height (90cm-100cm).
- Handrails do cover the flight of stairs throughout its length.
- Handrails are easy to grip.
- Handrails do extend horizontally beyond the first and last steps.
- There is a landing.
- Clear signs indicating the facilities on each floor are provided on landings.
- The lighting levels at the steps are varied.



1



2



3



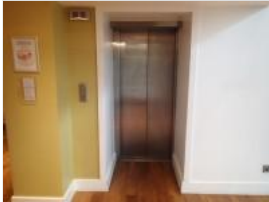
4

Lift

Collapse -

- There is a lift for public use.
- The lift is located in the reception foyer.
- The lift is clearly visible from the entrance.
- The lift is approximately 5m (5yd 1ft) from the hotel entrance.
- The lift is a standard lift.

- A member of staff does not need to be notified for use of the lift.
- The floors which are accessible by this lift are G, 2 and 3.
- Clear signs indicating the facilities on each floor are not provided on lift lobby landings.
- There is a clear level manoeuvring space of 150cm x 150cm in front of the lift.
- Lift doors do contrast visually with lift lobby walls.
- The external controls for the lift are not within 90cm - 110cm from the floor.
- The colour contrast between the external lift controls and the control plate is poor.
- The colour contrast between the external lift control plate and the wall is fair.
- The clear door width is 80cm (2ft 7in).
- The dimensions of the lift are 155cm x 135cm (5ft 1in x 4ft 5in).
- There are no separate entry and exit doors in the lift.
- There is a mirror to aid reversing out of the lift.
- There is not a list of floor services available within the lift.
- The lift does have a visual floor indicator.
- The lift does have an audible announcer.
- The controls for the lift are not within 90cm - 120cm from the floor.
- The lift controls are within 114cm - 125cm from the floor.
- There is not a hearing loop system.
- The lift does have Braille markings.
- The lift does have tactile markings.
- The lighting levels in the lift are good.



1



2

Accessible Room(s) (Rooms 228, 232 and 241)

Collapse -

Accessible Room Information

Collapse -

- The details in this section relates to the accessible room(s) with a lowered bath.
- This type of accessible room is located on the second floor.
- There is step-free access to this type of accessible room.
- Accessible rooms of this type have specifications that may vary.
- Guests do not need to open a door between the lift and the room(s).
- The narrowest width of the corridor leading to the room surveyed was 146cm.

Bedroom Features

Collapse -

- The accessible room surveyed is located on the second floor, to the right as you exit the lift.
- The accessible room surveyed at the time of the visit was Room 232.
- There is step-free access to the accessible room surveyed, via lift.
- There is numbered signage on or near the accessible room door.
- The door is key card activated.
- The fob/card reader height is 113cm.
- The width of the door is 85cm (2ft 9in).
- There are lowered spy holes available.
- The bed type is double.
- The bed height is not adjustable.
- The height of the bed is 48cm (1ft 7in).

- The measurement between the bed base and floor is 13cm (5in).
- The bed is not moveable.
- The room does have an unobstructed minimum turning space of 150cm x 150cm next to the bed.
- The height of the desk is 76cm.
- The desk is not height adjustable.
- The desk knee recess has the recommended dimensions of 70cm (height) x 50cm (depth).
- The room surveyed had a desk chair with armrests.
- Wardrobes have been adapted to allow use from a seated position.
- Light switches are between 75cm and 120cm (4ft) from floor level.
- Electric sockets are between 40cm and 100cm (4ft) from floor level.
- The window control type(s) for the room is a/are extended lever(s).
- There is an emergency alarm in the room.
- The emergency pull cord alarm is out of reach (higher than 10cm (4") from floor).
- The emergency alarm rings to reception.
- There is a flashing fire alarm beacon within the room.
- The type of flooring is carpet.

Ensuite Facilities

Collapse -

- The ensuite door opens outwards.
- The door weight is heavy.
- The door is locked by a twist lock.
- The width of the door to the ensuite is 88cm (2ft 11in).
- The dimensions of the ensuite are 217cm x 290cm (7ft 1in x 9ft 6in).
- The ensuite does have an unobstructed minimum turning space of 150cm x 150cm in front of the toilet seat.
- The ensuite has a non-slip floor.
- There is an emergency alarm within the ensuite.
- The emergency pull cord alarm is within reach and fully functional.
- The emergency alarm rings to reception.
- There is a flashing fire alarm beacon within the ensuite.
- Disposal facilities are available.
- There is a/are pedal waste paper bin disposal units.
- There is a mirror.
- The mirror is not placed at a lower level or at an angle for ease of use.
- There is a shelf immediately next to or behind the toilet.
- The shelf is not between 90cm and 100cm.
- There is a wash basin.
- The wash basin cannot be reached from seated on the toilet.
- The wash basin is not placed higher than 74cm (2ft 5in).
- The height of the wash basin is 70cm.
- There are vertical wall-mounted grab rails on both sides of the wash basin.
- The tap type is lever.
- There is a mixer tap.
- There is not a soap dispenser.

Toilet Details

Collapse -

- The height of the toilet seat above floor level is 52cm (1ft 8in).
- The toilet has a lid.
- There is a lateral transfer space.
- As you face the toilet pan the transfer space is on the right.
- The lateral transfer space is 105cm (3ft 5in).
- There is a flush, however it is not on the transfer side.
- There is not a spatula type lever flush.

- There is a dropdown rail on the transfer side.
- There is a/are wall-mounted grab rail(s) available.
- As you face the toilet, the wall mounted grab rails are on both sides.
- There is a vertical wall-mounted grab rail on the transfer side.
- There is a horizontal wall-mounted grab rail on the opposite side of the seat to the transfer space.
- There is a toilet roll holder.
- The toilet roll holder can be reached from seated on the toilet.
- The toilet roll holder is not placed higher than 100cm (3ft 3in).
- The height of the toilet roll holder is 80cm (2ft 7in).

Bath Details

Collapse -

- The ensuite has a lowered bath.
- The height of the side of the bath from floor level is 46cm (1ft 6in).
- The tap type is lever.
- There is a mixer tap.
- There is a shower over the bath.
- The shower head is height adjustable.
- The shower control type is lever.
- There is a/are wall-mounted grab rail(s) available for the bath.

Colour Contrast and Lighting

Collapse -

- The colour contrast between the external hotel room door and wall is poor.
- The colour contrast between the internal hotel room door and wall is good.
- The colour contrast between the hotel room walls and floor is good.
- The colour contrast between the external ensuite door and wall is fair.
- The colour contrast between the internal ensuite door and wall is poor.
- The colour contrast between the ensuite walls and floor is poor.
- The colour contrast between the drop down rail(s) and wall is good.
- The colour contrast between the wall-mounted grab rail(s) and wall is good.
- The toilet seat colour contrast is poor.
- The lighting levels in the room are adjustable.
- The lighting levels in the ensuite are good.



1



2



3



4



5



6



7



8

Standard Room(s) (Room 233)

Collapse -

Bedroom Features

Collapse -

- The room surveyed is located on the second floor, to the right as you exit the lift.
- The room surveyed at the time of the visit was Room 233.
- There is step free access to the room surveyed, via lift.
- There is numbered signage on or near the room door.
- The width of the door is 75cm (2ft 6in).
- The bed type is double.
- The height of the bed is 56cm (1ft 10in).
- The measurement between the bed base and floor is 13cm (5in).
- Light switches are not within 120cm (3ft 11in) from floor level.
- There is not an emergency alarm in the room.
- There is not a flashing fire alarm beacon within the room.
- The type of facilities within the ensuite include; a toilet, a wash basin, a bath and a shower.
- The ensuite door opens inwards.
- The width of the door to the ensuite is 66cm (2ft 2in).
- There is not an emergency alarm within the ensuite.
- There is not a flashing fire alarm beacon within the ensuite.
- The tap type is lever.
- There is a mixer tap.

Colour Contrast and Lighting

Collapse -

- The colour contrast between the external hotel room door and wall is poor.
- The colour contrast between the internal hotel room door and wall is good.
- The colour contrast between the hotel room walls and floor is good.
- The colour contrast between the external ensuite door and wall is good.
- The colour contrast between the internal ensuite door and wall is poor.
- The colour contrast between the walls and floor in the ensuite is fair.
- The lighting levels in the room are good.
- The lighting levels in the ensuite are good.



1



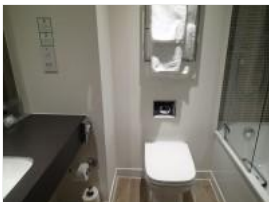
2



3



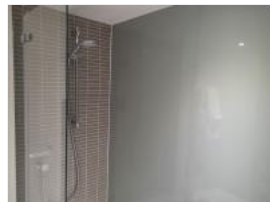
4



5



6



7



8

Standard Room(s) (Executive Room 343)

Collapse -

Bedroom Features

Collapse -

- The room surveyed is located on the third floor, to the right as you exit the lift.
- The room surveyed at the time of the visit was Room 343.
- There is step free access to the room surveyed, via lift.

- There is numbered signage on or near the room door.
- The width of the door is 76cm (2ft 6in).
- The bed type is zip and link.
- The height of the bed is 57cm (1ft 10in).
- The measurement between the bed base and floor is 13cm (5in).
- Light switches are not within 120cm (3ft 11in) from floor level.
- There is not an emergency alarm in the room.
- There is not a flashing fire alarm beacon within the room.
- The type of facilities within the ensuite include; a toilet, a wash basin, a bath and a shower.
- The ensuite door opens inwards.
- The width of the door to the ensuite is 68cm (2ft 3in).
- There is not an emergency alarm within the ensuite.
- There is not a flashing fire alarm beacon within the ensuite.
- The tap type is lever.
- There is a mixer tap.

Colour Contrast and Lighting

Collapse -

- The colour contrast between the external hotel room door and wall is poor.
- The colour contrast between the internal hotel room door and wall is fair.
- The colour contrast between the hotel room walls and floor is good.
- The colour contrast between the external ensuite door and wall is fair.
- The colour contrast between the internal ensuite door and wall is poor.
- The colour contrast between the walls and floor in the ensuite is fair.
- The lighting levels in the room are adjustable.
- The lighting levels in the ensuite are good.



1



2



3



4



5



6

Accessible Toilet(s)

Collapse -

- There is an/are accessible toilet(s) for public use.

Location and Access

Collapse -

- The accessible toilet surveyed is not for the sole use of disabled people.
- This accessible toilet is located on the ground floor, in the corridor between the restaurant and conference facilities.
- This accessible toilet is approximately 38m (41yd 1ft) from the hotel entrance.
- There is step-free access to the accessible toilet.

Features and Dimensions

Collapse -

- This is a shared toilet.
- A key is not required for the accessible toilet.
- There is pictorial signage on or near the toilet door.
- The door opens inwards.
- The door is heavy.
- The door is locked by a twist lock.
- The width of the accessible toilet door is 77cm (2ft 6in).
- The dimensions of the accessible toilet are 168cm x 176cm (5ft 6in x 5ft 9in).
- The accessible toilet does not have an unobstructed minimum turning space of 150cm x 150cm.
- The toilet has not got a non-slip floor.
- The height of the light switch/pull cord is 141cm from floor level.
- There is a lateral transfer space.
- As you face the toilet pan the transfer space is on the right.
- The lateral transfer space is 100cm (3ft 3in).
- There is a flush on the transfer side.
- There is not a spatula type lever flush.
- There is a dropdown rail on the transfer side.
- There is an emergency alarm.
- The emergency pull cord alarm is fully functional.
- There is not a flashing fire alarm beacon within the toilet.
- Disposal facilities are available in the toilet.
- There is a/are female sanitary, non-infectious waste and open waste paper bin disposal units.
- There is a/are coat hook(s).
- There are coat hooks in the toilet at 114cm and 164cm from the floor.

Position of Fixtures

Collapse -

- There is a/are wall-mounted grab rail(s) available.
- As you face the toilet the wall-mounted grab rail(s) is/are on both sides.
- There is a vertical wall-mounted grab rail on the transfer side.
- There is a horizontal wall-mounted grab rail on the opposite side of the seat to the transfer space.
- There is a mirror.
- The mirror is not placed at a lower level or at an angle for ease of use.
- There is not a shelf next to the toilet.
- The toilet has a lid.
- The height of the toilet seat above floor level is 46cm (1ft 6in).
- There is a toilet roll holder.
- The toilet roll holder can be reached from seated on the toilet.
- The toilet roll holder is not placed higher than 100cm (3ft 3in).
- There is a wash basin.
- The wash basin cannot be reached from seated on the toilet.
- The wash basin is not placed higher than 74cm (2ft 5in).
- There is a vertical wall-mounted grab rail on the right hand side of the wash basin.
- The wash basin tap type is lever.
- There is a mixer tap.
- There is a soap dispenser.
- The soap dispenser cannot be reached from seated on the toilet.
- The height of the soap dispenser is 88cm.
- There is not a towel dispenser.
- There is not a hand dryer.

Colour Contrast and Lighting

Collapse -

- The contrast between the external door and wall is good.
- The contrast between the internal door and wall is good.
- The contrast between the dropdown rail(s) and wall is good.
- The contrast between the wall-mounted grab rail(s) and wall is good.
- The toilet seat colour contrast is poor.
- The contrast between the walls and floor is good.
- The lighting levels are good.

Baby Changing Facilities

Collapse -

- Baby changing facilities are located within the accessible toilet.
- The baby change table is not set against the wall, permanently fixed at 75cm from the floor.
- The baby change table is not height adjustable.
- The height of the baby change table once extended is 98cm (3ft 3in).



1



2

Standard Toilet(s)

Collapse -

- Standard toilet facilities are available.

Access to Standard Female Toilet(s)

Collapse -

- The female toilet facilities that were surveyed are located on the ground floor, in the corridor between the restaurant and conference facilities.
- The female toilet(s) is/are approximately 36m (39yd 1ft) from the hotel entrance.
- There is step-free access to the female toilet(s).
- There is pictorial signage on or near the toilet door.
- An ambulant toilet with wall-mounted grab rails is not available.
- The wash basin tap type is lever.
- There is not a flashing fire alarm beacon within the toilets.
- Lighting levels are good.

Access to Standard Male Toilet(s)

Collapse -

- The male toilet facilities that were surveyed are located on the ground floor, in the corridor between the restaurant and conference facilities.
- The male toilet(s) is/are approximately 40m (43yd 2ft) from the hotel entrance.
- There is step-free access to the male toilet(s).
- There is pictorial signage on or near the toilet door.
- An ambulant toilet with wall-mounted grab rails is not available.
- The wash basin tap type is lever.
- There is not a flashing fire alarm beacon within the toilets.
- Lighting levels are good.